

OAK

Madison
Collection: New York Suite
Designer: Marco Piva

EN

Table with coated wooden bases and extra clear glass top. External side veneered in canaletto walnut or covered with satinized steel, internal side covered with leather. Details in bronzed painted steel.

Structure in curved plywood. Details in steel with bronzed metallic finishing, top in extra clear tempered glass thickness mm. 15.



Available wood finishings:
MI-F40 satinized canaletto walnut

Available metallic finishings:
MI-F50 bronzed

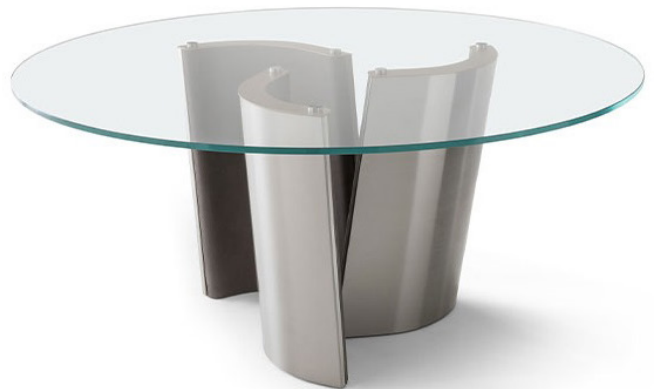
Available metal finishings:
MI-FAS satinized steel

Available upholsteries:
all leathers except galouchat

IT

Tavolo con basi in legno rivestite e piano in vetro extra chiaro. Lato esterno impiallacciato in noce canaletto o rivestito in acciaio satinato, lato interno rivestito in pelle. Dettagli in acciaio verniciato bronzato.

Struttura in multistrati curvato. Dettagli in acciaio in finitura metallizzata bronzata, piano in vetro temprato extra chiaro spessore mm. 15.

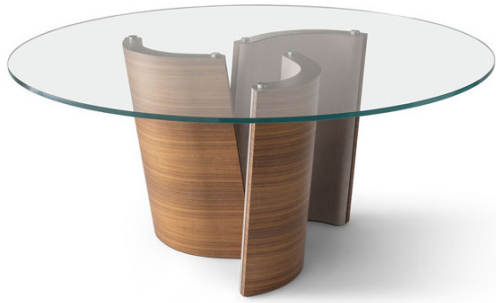


Finiture legno disponibili:
MI-F40 noce canaletto satinato

Finiture metallizzate disponibili:
MI-F50 bronzato

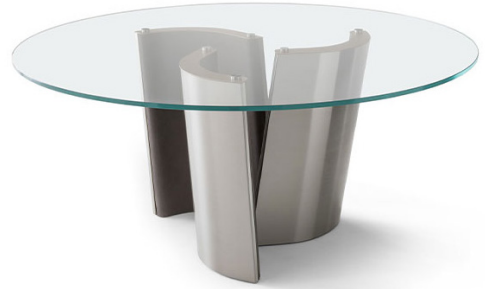
Finiture metallo disponibili:
MI-FAS acciaio satinato

Rivestimenti disponibili:
tutte le pelli tranne galouchat



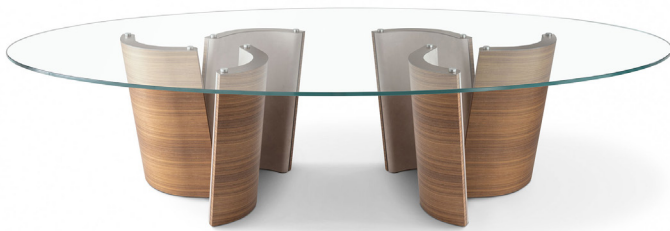
PM4010

External side veneered in canaletto walnut
Lato esterno impiallacciato in noce canaletto
cm. Ø 160×72H



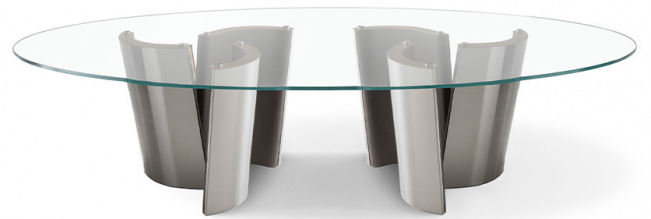
PM4010/1

External side covered with satinized steel
Lato esterno rivestito in acciaio satinato
cm. Ø 160×72H



PM4010/A

External side veneered in canaletto walnut
Lato esterno impiallacciato in noce canaletto
cm. 300×135×72H



PM4010/A/1

External side covered with satinized steel
Lato esterno rivestito in acciaio satinato
cm. 300×135×72H